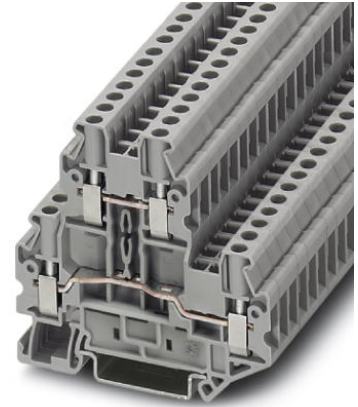



UTT 4

Order No.: 3044814

<http://eshop.phoenixcontact.de/phoenix/treeViewClick.do?UID=3044814>Double-level terminal block with screw connection, cross section: 0.14
mm² - 6 mm², AWG: 26- 10, width: 6.2 mm, color: Yellow

| Commercial data | |
|--------------------------|--|
| GTIN (EAN) |  4 046356 055512 |
| sales group | A832 |
| Pack | 50 pcs. |
| Customs tariff | 85369010 |
| Catalog page information | Page 41 (CL-2009) |

Product notes

WEEE/RoHS-compliant since:
08/17/2005

[http://
www.download.phoenixcontact.com](http://www.download.phoenixcontact.com)
Please note that the data given
here has been taken from the
online catalog. For comprehensive
information and data, please refer
to the user documentation. The
General Terms and Conditions of
Use apply to Internet downloads.

Technical data**General**

| | |
|-----------------------|------|
| Number of levels | 2 |
| Number of connections | 4 |
| Color | gray |

| | |
|------------------------------------|----|
| Insulating material | PA |
| Inflammability class acc. to UL 94 | V0 |

Dimensions

| | |
|------------------|---------|
| Width | 6.2 mm |
| Length | 69.9 mm |
| Height NS 35/7.5 | 65 mm |
| Height NS 35/15 | 72.5 mm |

Technical data

| | |
|----------------------------------|---------------|
| Rated surge voltage | 8 kV |
| Pollution degree | 3 |
| Surge voltage category | III |
| Insulating material group | I |
| Connection in acc. with standard | IEC 60947-7-1 |
| Nominal current I_N | 30 A |
| Nominal voltage U_N | 800 V |

Connection data

| | |
|--|----------------------|
| Conductor cross section solid min. | 0.14 mm ² |
| Conductor cross section solid max. | 6 mm ² |
| Conductor cross section stranded min. | 0.14 mm ² |
| Conductor cross section stranded max. | 6 mm ² |
| Conductor cross section AWG/kcmil min. | 26 |
| Conductor cross section AWG/kcmil max | 10 |
| Conductor cross section stranded, with ferrule without plastic sleeve min. | 0.14 mm ² |
| Conductor cross section stranded, with ferrule without plastic sleeve max. | 4 mm ² |
| Conductor cross section stranded, with ferrule with plastic sleeve min. | 0.14 mm ² |
| Conductor cross section stranded, with ferrule with plastic sleeve max. | 4 mm ² |
| 2 conductors with same cross section, solid min. | 0.14 mm ² |
| 2 conductors with same cross section, solid max. | 1.5 mm ² |
| 2 conductors with same cross section, stranded min. | 0.14 mm ² |
| 2 conductors with same cross section, stranded max. | 1.5 mm ² |

| | |
|---|----------------------|
| 2 conductors with same cross section, stranded, ferrules without plastic sleeve, min. | 0.14 mm ² |
| 2 conductors with same cross section, stranded, ferrules without plastic sleeve, max. | 1.5 mm ² |
| 2 conductors with same cross section, stranded, TWIN ferrules with plastic sleeve, min. | 0.5 mm ² |
| 2 conductors with same cross section, stranded, TWIN ferrules with plastic sleeve, max. | 2.5 mm ² |
| Type of connection | Screw connection |
| Stripping length | 9 mm |
| Internal cylindrical gage | A4 |
| Screw thread | M3 |
| Tightening torque, min | 0.6 Nm |
| Tightening torque max | 0.8 Nm |

Certificates / Approvals



Certification CSA, CUL, GL, UL

Certification Ex: IECEX, KEMA-EX

Accessories

| Item | Designation | Description |
|-----------------|----------------|---|
| Assembly | | |
| 3047316 | ATP-UTT4 2,5/4 | Partition plate, Length: 74.3 mm, Width: 2.2 mm, Height: 70 mm, Color: gray |
| 3047293 | D-UTT4 2,5/4 | End cover, Length: 69.9 mm, Width: 2.2 mm, Height: 57.5 mm, Color: gray |

Bridges

| | | |
|---------|---------|--|
| 3030336 | FBS 2-6 | Plug-in bridge, Number of positions: 2, Color: red |
| 3030242 | FBS 3-6 | Plug-in bridge, Number of positions: 3, Color: red |
| 3030255 | FBS 4-6 | Plug-in bridge, Number of positions: 4, Color: red |
| 3030349 | FBS 5-6 | Plug-in bridge, Number of positions: 5, Color: red |

| | | |
|---------|----------|---|
| 3030271 | FBS 10-6 | Plug-in bridge, Number of positions: 10, Color: red |
| 3030365 | FBS 20-6 | Plug-in bridge, Number of positions: 20, Color: red |
| 3032224 | FBS 50-6 | Plug-in bridge, Number of positions: 50, Color: red |

General

| | | |
|---------|----------------|--|
| 3047303 | DP-UTT B 2,5/4 | Spacer plate, Length: 69.9 mm, Width: 2.6 mm, Height: 33 mm, Color: gray |
|---------|----------------|--|

Marking

| | | |
|---------|------------------------|--|
| 0811228 | X-PEN 0,35 | Marker pen without ink cartridge, for manual labeling of markers, labeling extremely wipe-proof, line thickness 0.35 mm |
| 5060935 | ZB 6/WH-100:UNBEDRUCKT | Zack strip, unprinted: For individual labeling with M-PEN, ZB-T or CMS system, large batch, sufficient for labeling 1000 terminal blocks, for a terminal width of 6.2 mm, color: White |
| 1050499 | ZB 6:SO/CMS | Zack strip, 10-section, divisible, special printing, marking according to customer requirements |
| 1051003 | ZB 6:UNBEDRUCKT | Zack strip, unprinted, strips with 10 labels for individual labeling with M-PEN or CMS system, for terminal block width: 6.2 mm, color: white |

Plug/Adapter

| | | |
|---------|-----------|---------------------------------|
| 0201689 | MPS-IH BU | Insulating sleeve, Color: blue |
| 0201676 | MPS-IH RD | Insulating sleeve, Color: red |
| 0201663 | MPS-IH WH | Insulating sleeve, Color: white |
| 0201744 | MPS-MT | Test plugs |
| 3030925 | PAI-4 | Test adapter, Color: gray |
| 3030996 | PS-6 | Test adapter, Color: red |

Tools

| | | |
|---------|-------------|--|
| 1205053 | SZS 0,6X3,5 | Actuation tool, for ST terminal blocks, insulated, also suitable for use as a bladed screwdriver, size: 0.6 x 3.5 x 100 mm, 2-component grip, with non-slip grip |
|---------|-------------|--|

Diagrams/Drawings

Circuit diagram



Address

PHOENIX CONTACT Inc., USA
586 Fulling Mill Road
Middletown, PA 17057, USA
Phone (800) 888-7388
Fax (717) 944-1625
<http://www.phoenixcon.com>



© 2010 Phoenix Contact
Technical modifications reserved;