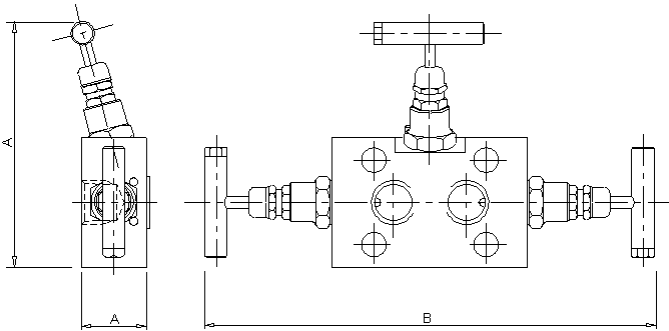


Product Data Sheet

Y34/YV34 Type 3 Valve Manifold



The 'Y34' and 'YV34' Type 3 valve manifolds are designed for direct mounting to differential pressure transmitters, with separate isolation for LP and HP inlets plus equalising valve for simple calibration. Each needle valve head is designed for safe and reliable isolation, giving bubble tight shut off, with non-rotating & anti-galling tip and dynamic self-adjusting spindle seal to give long service life in a variety of service conditions.

Part No.	Connections Size	A	B	C	Weight (Kgs)
Y34	½" F x FLANGE	4.7	8.6	1.2	1.5
YV34	½" F x FLANGE WITH VENT	4.7	9.1	1.2	1.5

Key Features of the Oliver Needle Valve range

- Non rotating tip - self centering & anti-galling
- Piston ring - gives dynamic adjustment of gland seal in response to pressure change
- Anti-blow out spindle - a major safety feature
- Secure seal - precision machined to give leak free operation for the life of the valve. Available in either PTFE or Grafoil

Standard Specification

Pressure: 6000psi	Packing: PTFE	Handle: T-Bar	Bore: 0.21" (5.4mm)
Temp: 240 deg C	Thread form: NPT	Seat: Metal to metal	CV: 0.46
4 x 7/16" UNF bolts for mounting to transmitter		2 x PTFE/Grafoil seal rings for transmitter flange	
1/2" Inlet Connections		1/4" NPT Plugged Vent Connection (YV34 only)	

Ordering Code

(Typical example) →	Y34	S	/	BT	/	AT
Type	Y34 - Female x Flanged YV34 - Female x Flanged with vent					
Material	S - 316S31 Stainless Steel HC - Hastalloy (C276) M - Monel (400) (Others available)					
Optional Connections (NPT Standard)	BT - BSP Taper					
Options	AG - Grafoil LT200 - Cryogenic Head Unit (-200°C) AT - Anti-Tamper MT - Metering Tip BKTC - Carbon steel mounting bracket MTG - Tapped Mounting Holes x 2 BKTS - Stainless steel mounting bracket NA - NACE MR-01-75 (latest revision) HL - Handle Locking OXY - Oxygen Cleaned HL-PI - Handle Locking + Position Indicator PK - PEEK Soft Tip HW - Hand Wheel SSB - Stainless steel transmitter mounting bolts LT100 - Cryogenic Head Unit (-100°C) (4800 psi max pressure rating)					